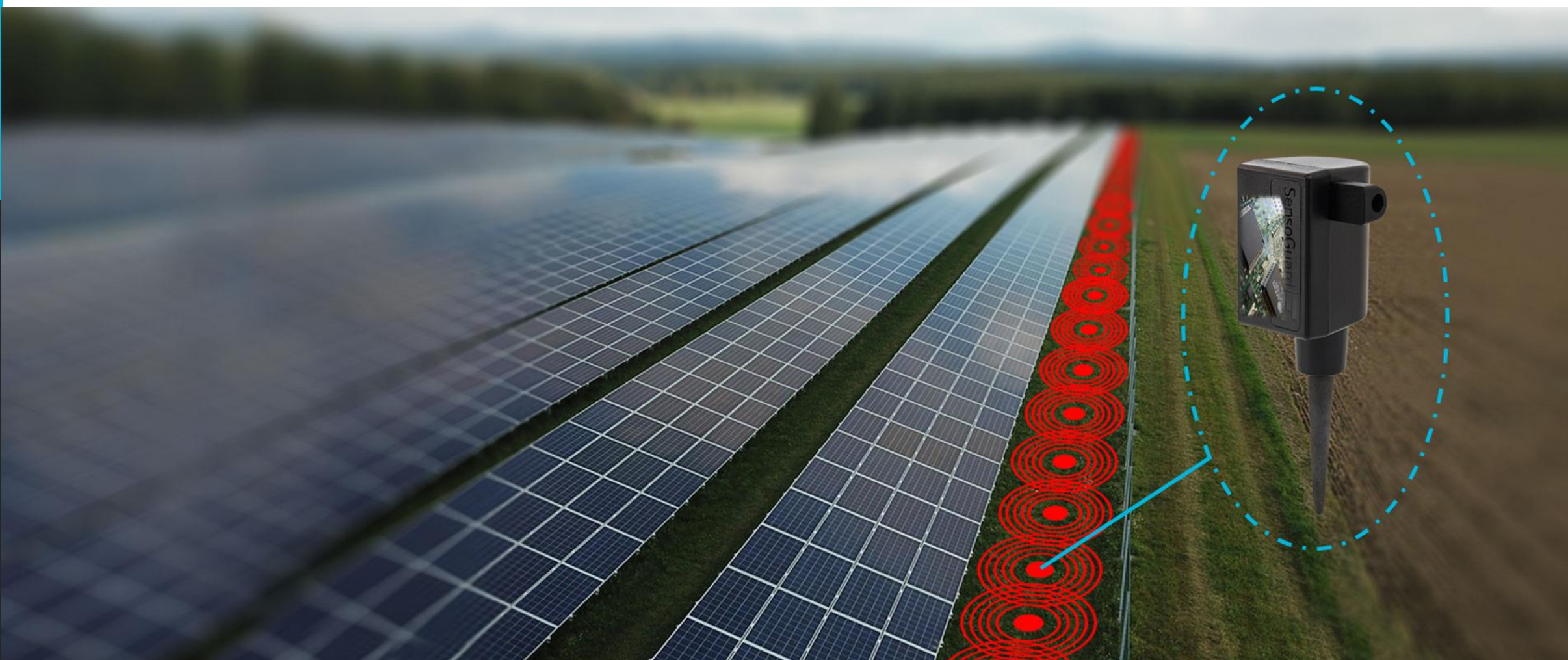


# INVISIFENCE PLUS | Features And Specifications

## Contents

1. <a href="#">Overview</a> .....	1
2. <a href="#">System Layout</a> .....	2
3. <a href="#">Operation</a> .....	3
4. <a href="#">Technical Specifications</a> .....	4-5



## OVERVIEW | INVISIFENCE PLUS

The **InvisiFence Plus** system composed of a cable with smart seismic sensors and a Hub unit.

The system feature fully distributed sensing and processing capabilities.

Each sensor includes a DSP processor for local sampling & processing.



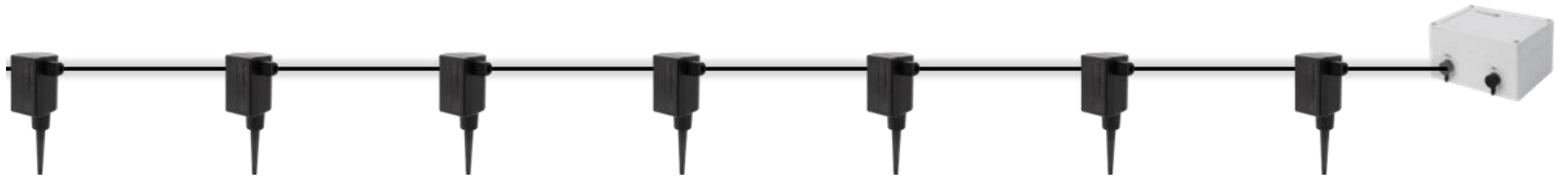
### Key Features Of The System

- Invisible alert system based on seismic technology
- Can operate independently or integrated with existing systems
- Pinpoint intrusions: sensor level alarm localization
- Accurately detects and locates multiple simultaneous intrusions
- Sensitivity adjustment Per sensor
- Minimum Infrastructure required: Each Hub unit Detects and locates perimeter intrusions over distances of up to 500m
- No maintenance, Plug & Play installation
- Detection And Classifications: Intruder (footsteps), Digging, Vehicle

### System Components

- Smart Seismic Sensor Cable
- Hub Unit

## SYSTEM LAYOUT | INVISIFENCE PLUS

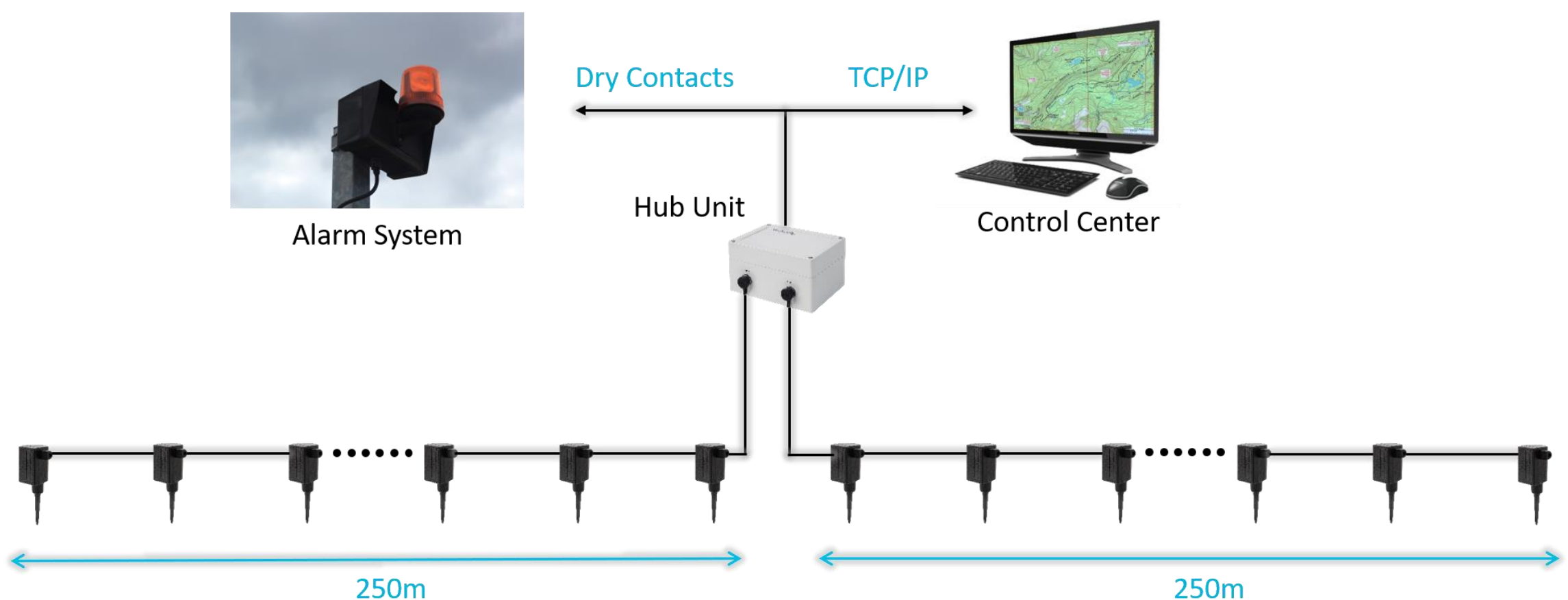


The InvisiFence Plus system composed of a cable with smart seismic sensors and a Hub unit.

The system features fully distributed sensing and processing capabilities. Each sensor includes a DSP processor for local sampling & processing.

The smart seismic sensors are normally placed with 6.6m spacing (different configurations are also available), and connected to a central hub unit via RS485 bus.

InvisiFence Plus Hub can manage a line of up to 500m (1,640feet), 250m for each side of it.



## OPERATION | INVISIFENCE PLUS

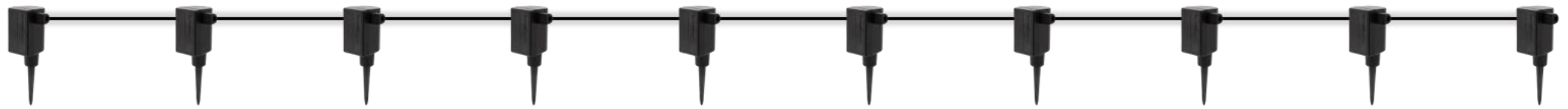
### How It Work

- The smart buried seismic sensors are installed along the perimeter
- The sensors continuously analyze ground vibrations and creates a virtual fence of 8m width and 25m depth
- Each sensor includes embedded processors which analyze real-time signals and search for patterns of footsteps, digging and vehicle activity
- Upon intrusion detection, the sensors immediately forward the relevant data to Hub unit
- SensoGuard Or 3<sup>rd</sup> party Command and Control software displays alarms and real time video



# SPECIFICATIONS | INVISIFENCE PLUS

## InvisiFence Plus Cable



OVERVIEW

LAYOUT

OPERATION

SPECIFICATIONS

DESCRIPTION	
<b>Maximum Sensors on String</b>	Up to 40 sensors per string
<b>Operating Radius Per Sensor</b>	<ul style="list-style-type: none"> <li>• <b>Footsteps</b> <ul style="list-style-type: none"> <li>▪ Up to 12m radius</li> <li>▪ Up to 39ft radius</li> </ul> </li> <li>• <b>Vehicles</b> <ul style="list-style-type: none"> <li>▪ Up to 25m radius</li> <li>▪ Up to 82ft radius</li> </ul> </li> <li>• <b>Digging</b> <ul style="list-style-type: none"> <li>▪ Up to 25m radius</li> <li>▪ Up to 82ft radius</li> </ul> </li> </ul>
<b>Sensitivity Adjustments</b>	Sensitivity Adjustments per sensor
<b>IP Rating (MIL-STD 810G)</b>	IP68
<b>Power Supply</b>	12V (9 to 20VDC)
<b>Power Consumption (Per Sensor)</b>	15mW (1.3mA@12V)
<b>Working Temperature (MIL-STD 810G)</b>	-40 <sup>o</sup> to 85 <sup>o</sup> Celsius
<b>Recommended installation depth</b>	20-50cm
<b>Bus Communication</b>	RS485

# SPECIFICATIONS | INVISIFENCE PLUS

## InvisiFence Plus Unit



DESCRIPTION		
<b>Bus Communication</b>	RS485, control 500m of InvisiFence Plus cable	
<b>Supported Line length per Hub</b>	250m (820ft) single side Hub	500m (1640ft) double sided Hub
<b>Alarm Output Interface</b>	RS232, TCP/IP, Dry Contacts	
<b>Alarm Resolution</b>	Sensor level alarm localization (dedicated zone for each sensor)	
<b>Dry contact outputs</b>	18 / 36 (single/double sided Hub)	
<b>External Sensor/Camera Inputs</b>	6 / 12 (single/double sided Hub)	
<b>IP Rating (MIL-STD 810G)</b>	IP67	
<b>Power Supply</b>	12V (9 to 20VDC)	
<b>Working Temperature (MIL-STD 810G)</b>	-40 <sup>0</sup> to 85 <sup>0</sup> Celsius	-40 to 185F
<b>Weight</b>	475g	1.0lbs
<b>Size (L*W*H)</b>	160mm*120mm*88mm	6.3"*4.7"*3.4"