

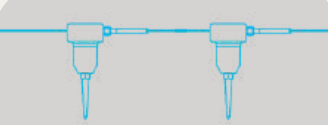
# InvisiFence Plus

## Unmatched Reliability, Invisible Fence

The InvisiFence Plus system is the first and only fully digital buried seismic system for perimeter security. The InvisiFence Plus buried sensor cable creates an invisible perimeter security system around the secured area – one that is impossible to dig under or jump over without being detected.




### HOW IT WORKS?




**1.SENSORS**

The InvisiFence Plus include a sensor cable and an HUB Unit. The sensor cable should be buried 40cm below the ground.




**2.ANALYSIS**

The InvisiFence Plus includes adaptive self-learning algorithms with exceptionally high recognition level of diverse threats.



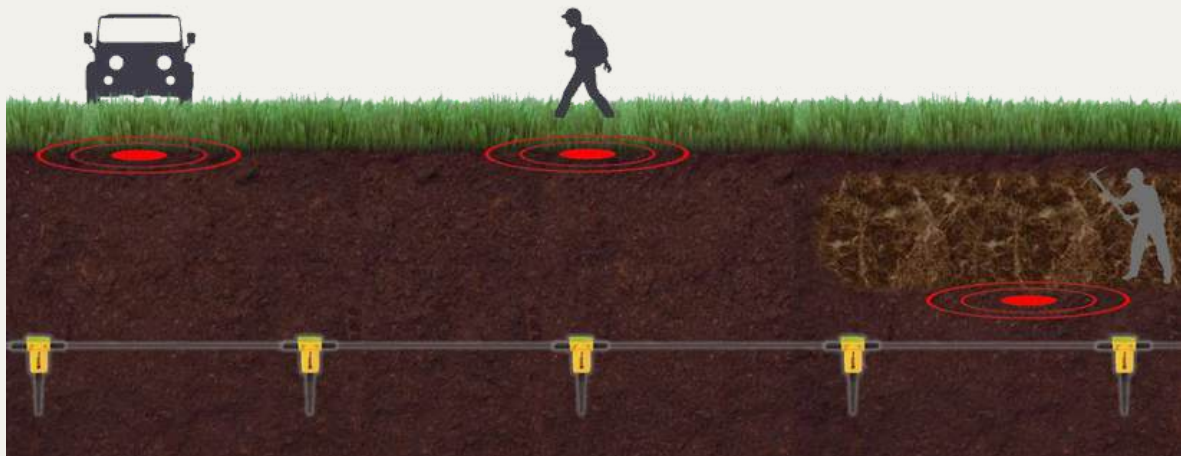
**3.DETECTION**

Upon detection the system can distinguish between various threats above or below ground: footsteps, moving vehicles, digging and more.



**4.ALERT**

An alarm is triggered in the system that can be passed to an Alarm System or VMS.



# System Components

The **InvisiFence Plus** system composed of a cable with smart seismic sensors and a HUB unit. The system features fully distributed sensing and processing capabilities. Each sensor includes a DSP processor for local sampling & processing.

## HUB UNIT

The **InvisiFence Plus** system includes a HUB Unit on each section. There are single sided and double sided HUB Units. Single side HUB Unit can control sensors cable line with up to 38 sensors, double sided HUB Unit can control 2 lines of 38 sensors.



## SENSOR CABLE

The **InvisiFence Plus** sensors cable is a line with up to 38 smart seismic sensors. Each sensors includes a DSP chip which analyze seismic signal locally, The InvisiFence Plus is a fully digitally distributed sensors system. Sensors cable is supplied at lengths of up to 38 sensors. Sensors cable includes 4 wires for DC and RS485 communication bus

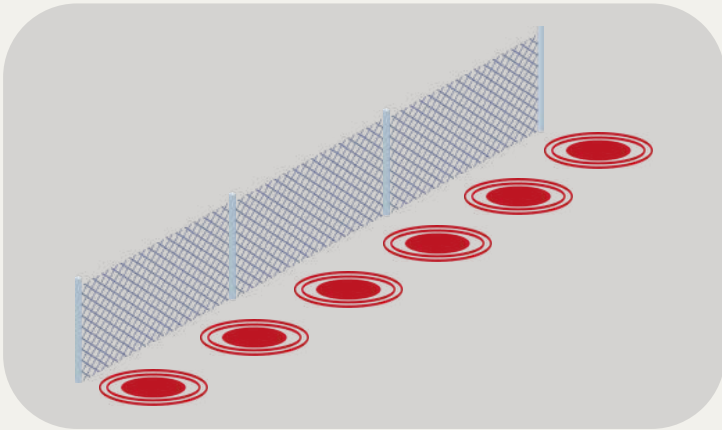


# Flexible Layout

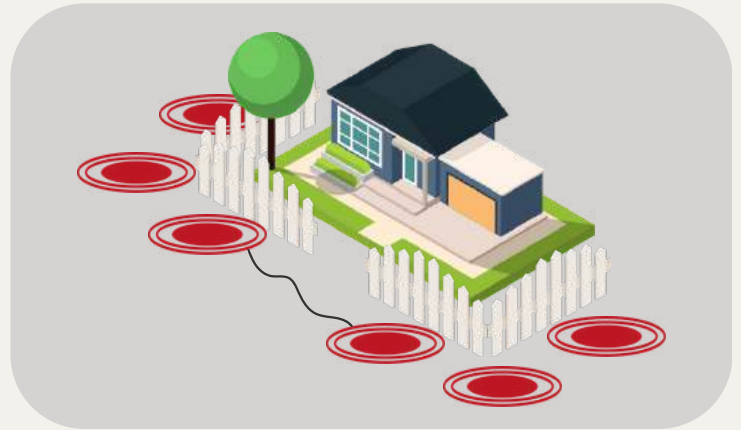
Suitable for small residences to long borders. Modular design and independent sections operation, ensures scalability and adaptability. No single point of failure ensures system durability. Adapts to any site layout with ease, you can cut the digital sensor cable anywhere needed.

**Continuous Installation:** This layout provides continuous virtual fence around the area of interest.

**Section Installation:** With this layout security coverage can be customized and adjusted according to specific site requirements. Maintaining comprehensive protection while accommodating practical needs as risk analysis or budget limitations.

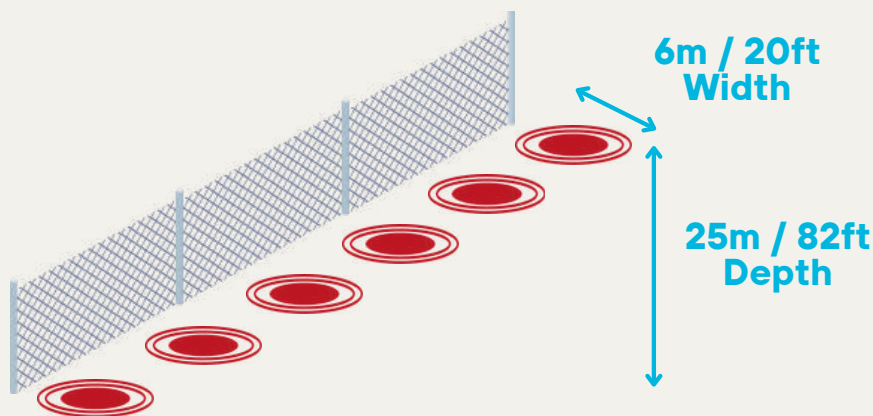


**Continuous Installation**



**Section Installation**

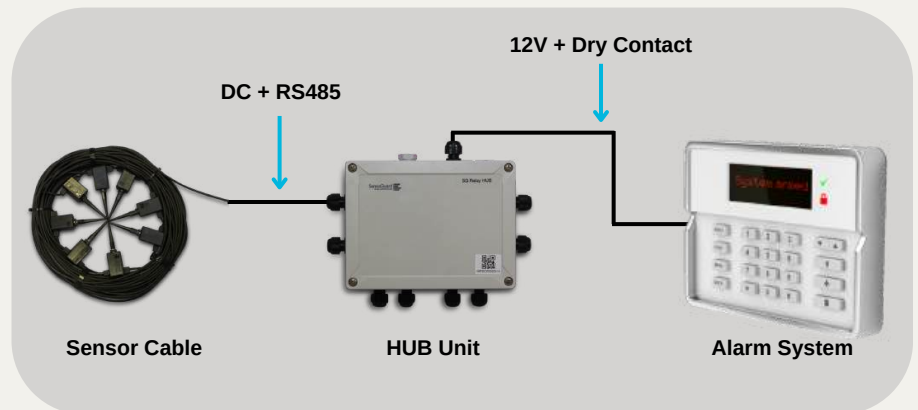
The InvisiFence Plus system creates a virtual fence with a width of 6m and a depth of 25m, it is impossible to dig under or jump over without being detected.



# Alert Options: Choose Operation Mode

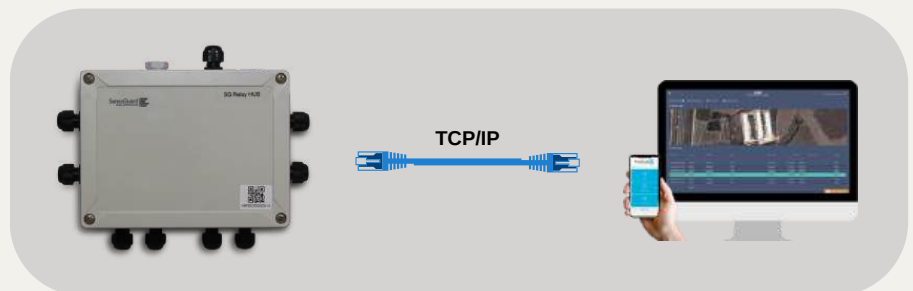
## CONNECTING TO EXISTING ALARM SYSTEM

The sensors and cameras are connected to the alarm system via dry contact, Alerts are received through the Alarm System.



## STAND ALONE: CCS-ONSITE COMMAND & CONTROL SOFTWARE

Alarm management via CCS-OnSite with built-in integration with leading VMS software.



# Built for Harsh Environments

**InvisiFence Plus** is designed to meet military standards, ensuring robust performance in extreme conditions. With an IP68 rating, it operates reliably in temperatures ranging from  $-40^{\circ}\text{C}$  to  $85^{\circ}\text{C}$  ( $-40^{\circ}\text{F}$  to  $185^{\circ}\text{F}$ ). This makes it ideal for both harsh environmental conditions and critical security applications.



**Military Standards**



**IP68 Rating**



**$-40^{\circ}\text{C}$  to  $85^{\circ}\text{C}$   
( $-40^{\circ}\text{F}$  to  $185^{\circ}\text{F}$ )**

## Main Features



**Hard To Defeat**

Underground System (Isolated) minimize risk of vandals / cable cut.



**Plug & Play**

Simple Installation, Easy & Short training.



**Volumetric Detection**

High level of protection, above and underground.



**Weather-Proof**

Immune to weather conditions: Rain, Fog, Wind, Day & Night.



**Line Of Sight**

Our Sensors feel the threat's vibrations (can work in forestry areas).



**Flexible Layout**

Can be installed in sections / continuous according to needs.

# FAQs

**1. How hard is it to install the InvisiFence system? Do I need any specific training or knowledge?**

InvisiFence Plus is very easy to install. Moreover, we supply the system pre-configured and labeled according to site dimensions and layout in order to simplify installation by local integrator. In addition, we usually have a remote training session (1-2 hours training) to cover all aspects of installation.

**2. Are there false alarms from nearby fences? Can I install InvisiFence next to metal objects? is there a recommended minimum distance from a fence?**

The InvisiFence Plus system is not influenced by nearby fences or any other metal objects (opposite to buried coax cables).

**3. Is it influenced by rain or wind?**

No, the system isn't influenced by rain or wind, or other environmental conditions.

**4. Can we connect the system to VMS software?**

Yes, we have pre-built integration with leading VMS. SensoGuard can provide our alarm API protocol for simple integration with any software, we are also happy to assist with any integration effort.

**5. Can we connect the system to main power supply or is it battery-operated only?**

The system can operate from external 12Vdc or from solar power system.

**6. What are InvisiFence's available output options?**

You can set the output alarms in two ways: dry contact outputs (which you can connect to any alarm panel) or protocol output (for C&C, VMS or other 3rd party integration).

**7. Can I change the system's sensitivity and configurations after installation?**

Yes, you can change the settings after installation. At any time, you can change the sensitivity level and modify the configuration on any unit and sensor. Users can control all settings from the hub unit.

