

AI-Powered Customer-Space Analysis

# SpaceVision

SpaceVision

Do Not Distribute:  
Authorized Personnel Only

Copyright(C) 2024SpaceVision. All Rights Reserved.

# Difference from Facial Recognition Technology

---

	Facial Recognition Technology	SpaceVision AI's Technology
What Information is Collected?	Facial Information	Gender / Age Group / Posture / Gaze Direction
Is the Information Capable of Directly Identifying Individuals?	Identifiable	Non-Identifiable
Is There a Possibility of Identifying Individuals When Combined with Other Information?	Inherently Identifiable Information	No identifiers available for combination

# Case Study: Clearview AI

---

## Clearview AI Technology

Clearview AI's technology fundamentally collects facial information that can be used to identify individuals.

Facial information is inherently identifiable and can be connected to various personal data. It is intrinsically linked to individuals, is typically permanent, unique, and remains relatively stable over time, making it difficult to alter. This uniqueness and permanence are why facial information collection is strictly regulated under most national privacy laws.

[The court ruling warns of significant risks if facial information is misused by Clearview AI or third parties.](#) For instance, if someone's facial information is collected without consent and used as an identifier for banking transactions, this identifier could be exploited for illegal transfers.



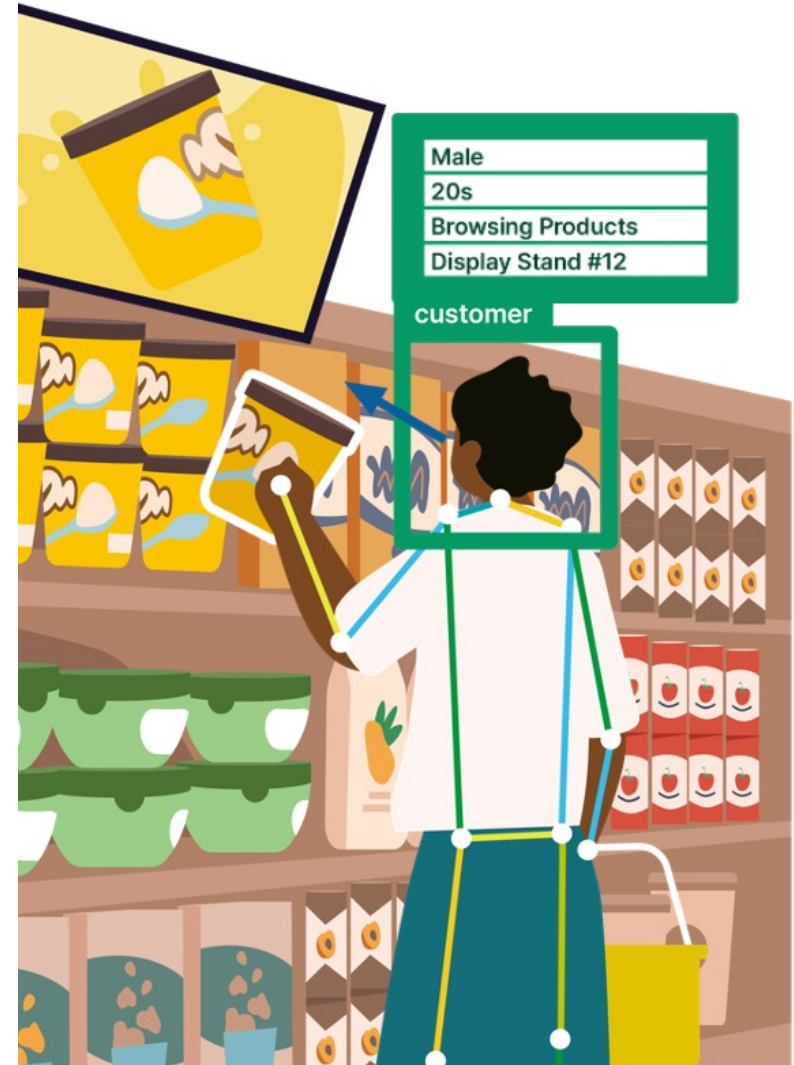
# Case Study: Clearview AI

---

## SpaceVision AI's Technology

Our technology collects only information on the gender, age, posture, and gaze direction of the audience; it does not collect facial information. It is nearly impossible to identify individuals using only this data.

Of course, privacy laws consider not only information that can directly identify individuals but also information that, when combined with other data, might identify individuals as personal data. However, our technology neither collects nor provides the identifiers needed to combine our data with other information. Even if there were an intent to combine it with other data, our technology does not offer a method for doing so.



# Case Study: Clearview AI

---

## Conclusion

In summary, laws and legal precedents regulate the collection of information that can identify individuals. Clearview AI's technology collects facial information, which can identify individuals, and doing so without consent is illegal.

However, our technology does not collect information that can identify individuals, such as facial information. We only collect data on gender, age, posture, and gaze direction, and we do not collect or provide any identifiers that could be combined with other information. This distinction is why Clearview AI's legal issues do not apply to our technology.

**End of Document**