

OutWatch

AI Analytics Alarm Monitoring Service

Human



Animal



Self-Monitoring

\$ Cost
No monthly fees
FREE

🕒 Time Investment
High time commitment
24/7 personal availability required

- You receive and handle all alerts (including false alarms)
- Must constantly check phone/device for notifications
- 2-4 hours per month spent reviewing alerts

Professional Monitoring

\$ Cost
Monthly subscription required
\$50-100/month

🕒 Time Investment
Minimal time commitment

- Monitoring center filters false alarms for you
- 24/7 coverage by trained security personnel





What is OutWatch?

SensoGuard - Every Second Counts

- ✓ AI-based alarm monitoring system with real-time verification
- ✓ Proprietary AI Vision analytics model
- ✓ Reduces false alarms by approximately 95%
- ✓ Only verified threats generate notifications
- ✓ Centralized management of all outdoor cameras

Key Advantages



98% Accuracy

Drastically reduced false alarms



Customizable Detection

Select specific threats and sensitivity



Universal Compatibility

Works with any camera/NVR brand



Centralized Management

Dashboard with map view

OutWatch In Numbers

Servicing Above **10K**
Cameras/NVR

More Than **2M**
False Alarm Filtered

16K Hours Saved
(30s for each alarm)

6 Years Run Time





Improved Intelligence

SensoGuard - Every Second Counts

SensoGuard
Every second counts

IP Cameras

Limited CPU

Cameras have a limited CPU power to perform AI analytics, restricting their ability to run advanced detection algorithms and resulting in basic algorithms with high false alarm rates.

Limited Classification

Built-in camera analytics can only classify humans and vehicles.

General and Static Analytics Model

Cameras use a generic analytics models (indoor and outdoor) that cannot be retrained to improve performance.

OutWatch Service

Powerful Processing

OutWatch utilizes centralized server processing with unlimited resources, enabling AI algorithms to analyze images with 98% accuracy and without the limitations of camera-based processing.

Advanced Classification

OutWatch's proprietary AI analytics can precisely identify and classify humans, animals, vehicles and trucks with adjustable sensitivity levels for each category.

Specialized Analytics Model

OutWatch have an AI model specifically designed and trained for outdoor environments.
We train our model continuously to improve performance





How OutWatch Works?

SensoGuard - Every Second Counts

SensoGuard
Every second counts



Camera Detection



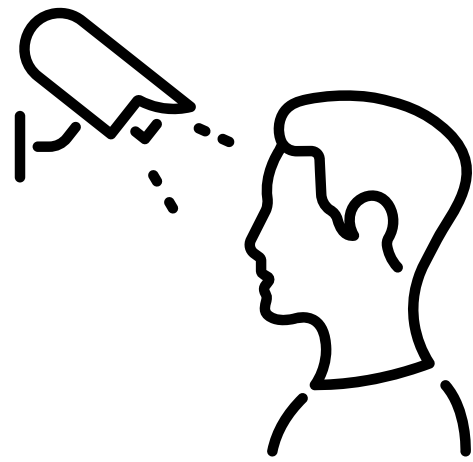
OutWatch Analysis



Smart Notification

Camera Detection

- Cameras with motion detection/analytics send alarms to OutWatch server



OutWatch Analysis

- Alarm images are processed through proprietary AI Vision analytics model
- System identifies and classifies potential threats



Smart Notification

- Push notifications sent immediately to end-user smartphones
- Only verified threats of interest trigger alerts



✓ False Alarms Reduction

OutWatch reduce false alerts by about 95%, only verified alerts are sent as alerts to the users.

Images ↓	True Alarms	False Alarms
94038	1671	92367

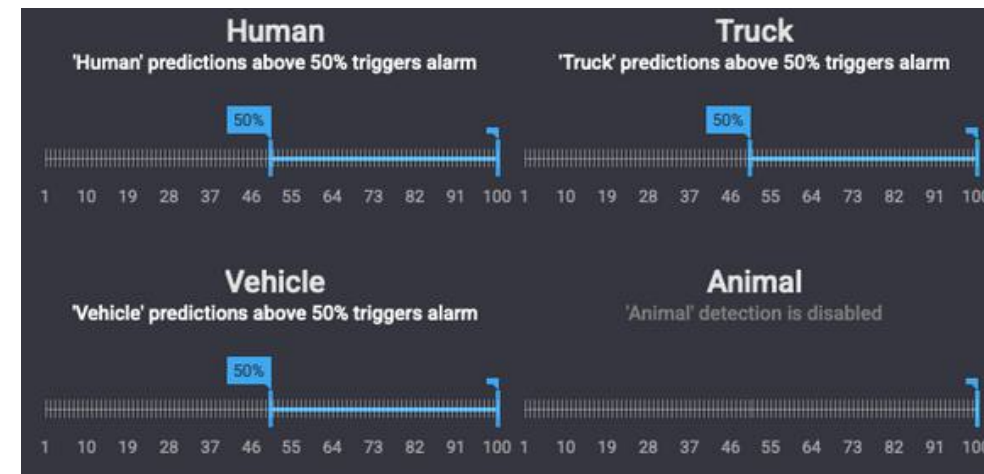
Real example from server

✓ Advanced Analytics

User can customize the object size thresholds (minimum and maximum), and precise region of interest (ROI) definition

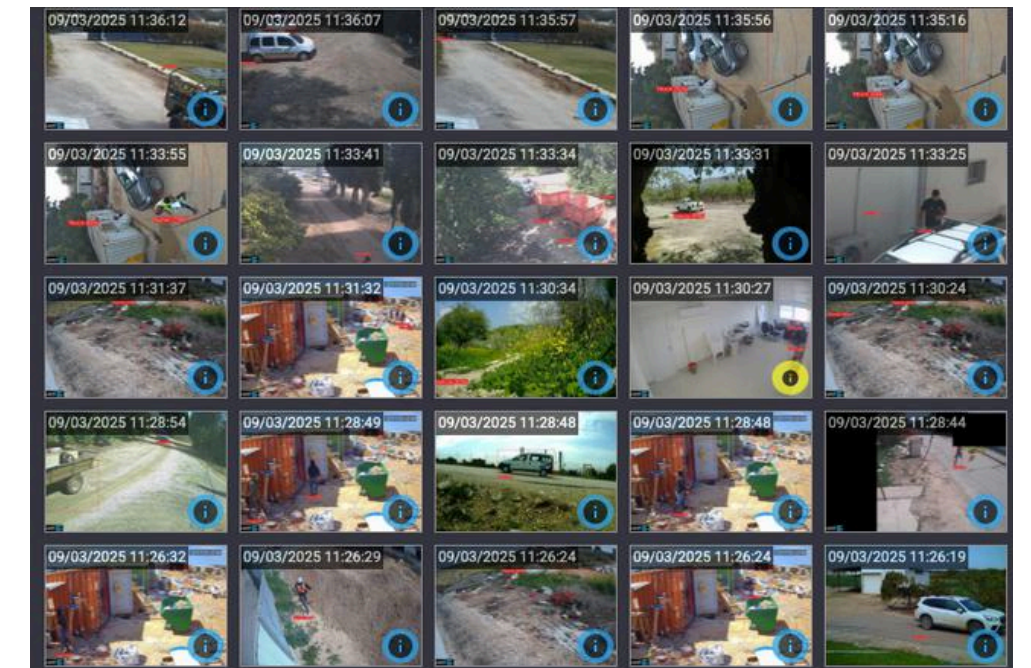
✓ Threat Classification

Alarm images are analyzed using our proprietary AI Vision analytics model. User can customize the detection level for each threat



✓ Alarm View

Users can see all the alarms that has been received from the camera





Application

SensoGuard - Every Second Counts

SensoGuard
Every second counts

✓ **illegal Dumping**

OutWatch captures evidence-footage, while dramatically reducing false alarms from animals or environmental factors.

✓ **Construction Sites**

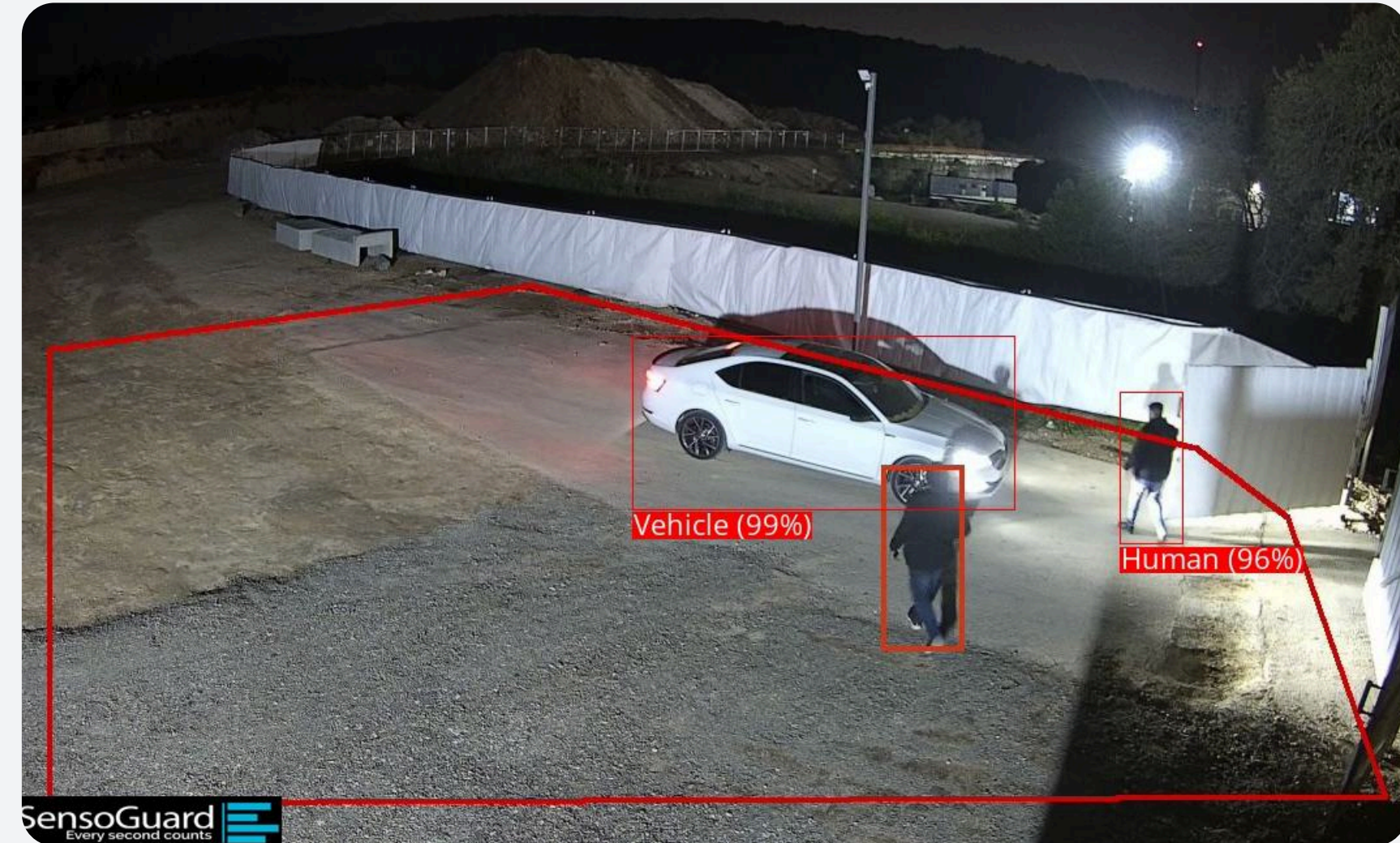
OutWatch reduces security personnel costs while providing comprehensive coverage and immediate alerts to site managers when security breaches occur.

✓ **Gated Communities**

OutWatch transforms security operations for gated communities by enabling a single security person to effectively monitor all cameras from one control center.

✓ **Remote Areas**

OutWatch empowers law enforcement to monitor isolated locations with limited presence while providing real-time alerts for suspicious activities.





OutWatch App

SensoGuard - Every Second Counts

SensoGuard
Every second counts

The OutWatch App brings monitoring capabilities to mobile devices, allowing security personnel to stay connected while on the move.

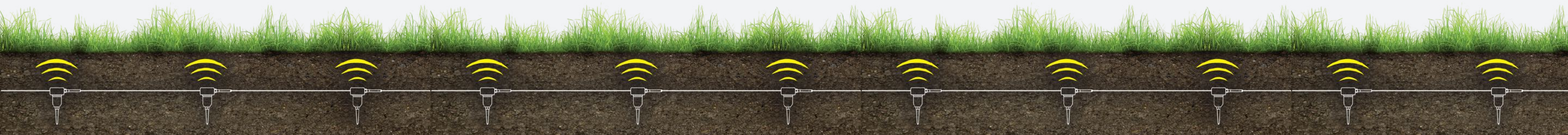
OutWatch App main features:

- Receive instant push notifications for critical alerts
- Control camera settings and configurations remotely



User

Security Guards





OutWatch Web

SensoGuard - Every Second Counts

SensoGuard
Every second counts

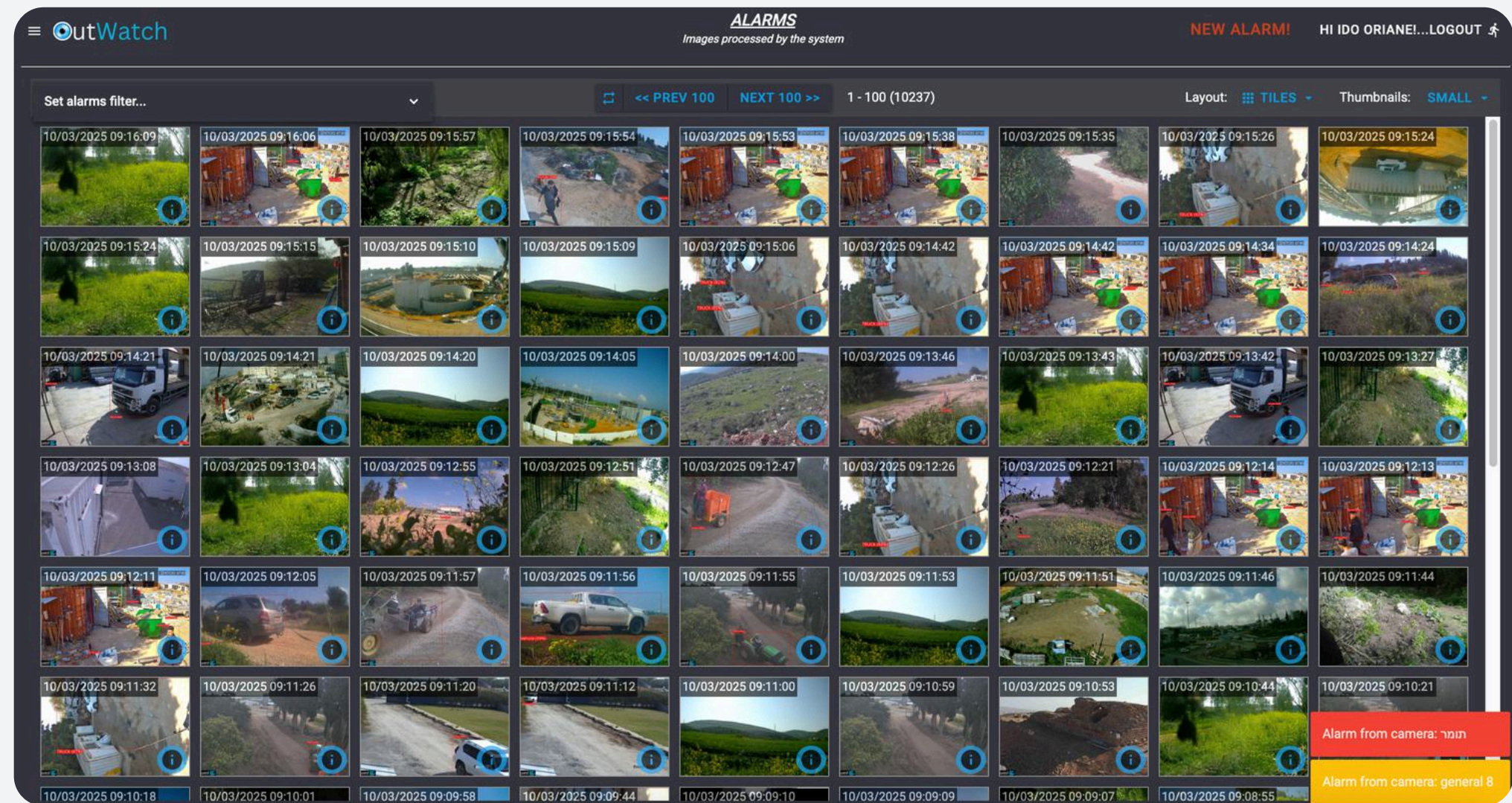
The OutWatch Web is designed for remote monitoring with browser-based accessibility.

OutWatch Web main features:

- Access the OutWatch platform from any device with a web browser
- View real-time alerts and notifications across multiple locations
- Review and manage historical alert footage through an intuitive interface

User

Security Manager



OutWatch Desktop

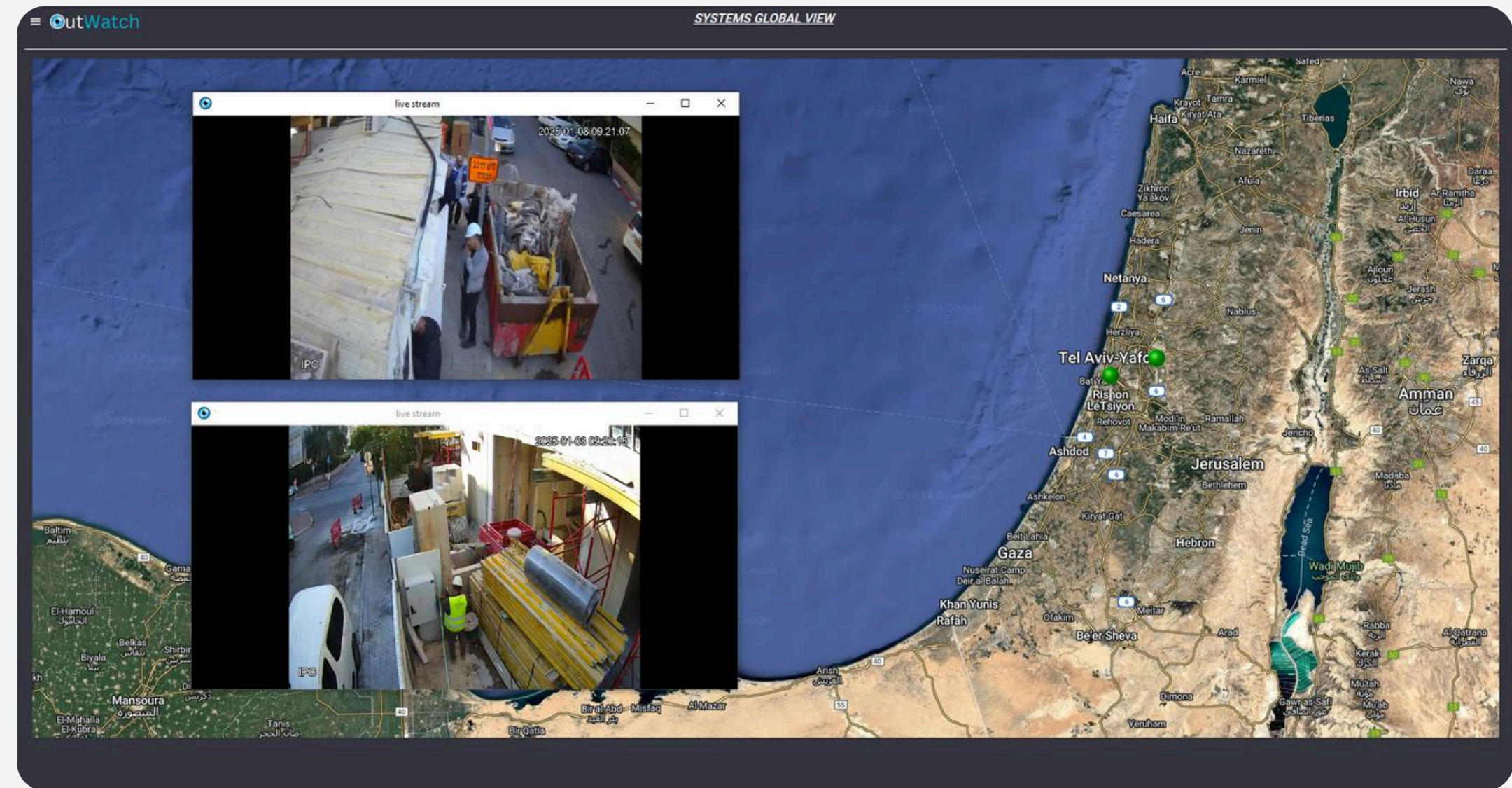
SensoGuard - Every Second Counts

The OutWatch for Desktop is designed for small/medium alarm centers with an additional capabilities to the existing OutWatch version.

OutWatch for Desktop main features:

- Receive real-time alerts from remote IP or trail cameras
- Watch live video stream from remote IP cameras
- Local recording of live video from remote IP cameras
- Filtering and reducing alerts from remote IP and trail cameras using an advanced analytics model

Alarm Centers



SensoGuard

Every second counts



Seismic Security Solutions

